



AntConc (Windows, MacOS, Linux)

Build 4.3.0

Laurence Anthony, Ph.D.

Center for English Language Education in Science and Engineering, School of Science and Engineering, Waseda University, 3-4-1 Okubo, Shinjuku-ku, Tokyo 169-8555, Japan

April 10, 2024



Introduction

AntConc is a freeware, multiplatform tool for carrying out corpus linguistics research, introducing corpus methods, and doing data-driven language learning. It runs on any computer running Microsoft Windows (built on Win 10), MacOS (built on Mac Catalina), and Linux (built on Linux Mint). It is developed in *Python* and *Qt* using the *PyInstaller* compiler to generate executables for the different operating systems. It uses SQLite as the underlying database.

Getting Started

Windows - Installer

Double click the *AntConc.exe* file and follow the instructions to install the application into your Programs folder. You can delete the .exe file when you are finished. You can start the application via the Start Menu.

Windows - Portable

Unzip the *AntConc.zip* file into a folder of your choice. In the *AntConc* folder, double click the *AntConc.exe* file to launch the program.

Macintosh OS X

Double click the *AntConc.dmg* file to create a *AntConc* disk image on your desktop. Open the disk image and drag and drop the *AntConc* app onto the Applications folder (or into another location if you desire). You can then launch the app by double clicking on the icon in the Applications folder or the Launchpad.

Linux

Decompress the *AntConc.tar.gz* file into a folder of your choice. In the *AntConc* folder, double click the *AntConc.sh* file to launch the software. On the command line, type `./AntConc.sh` to launch the software.

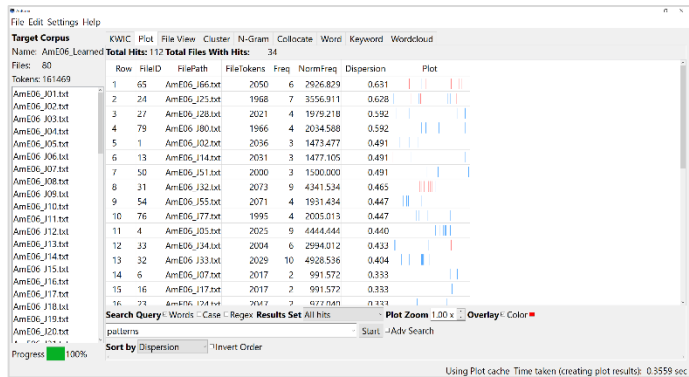
Overview of Tools

AntConc contains nine tools that can be accessed either by clicking on their 'tabs' in the tool window, using CTRL+TAB to toggle through the tools, or using the key combination CTRL + Tool Number (e.g., CTRL +1 for KWIC, CTRL +2 for Plot) to select a specific tool.



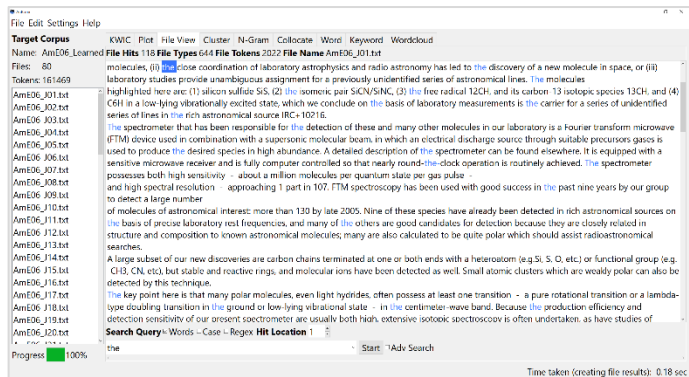
KWIC (Key-Word-In-Context) Tool

This tool shows search results in a concordance or 'KWIC' (Key-Word-In-Context) format. This allows you to see how words and phrases are commonly used in a corpus of texts.



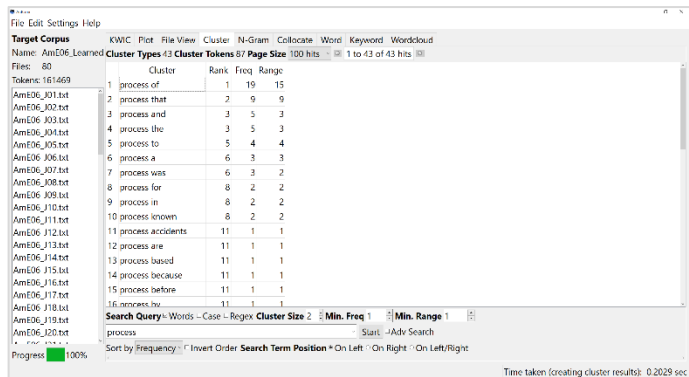
Plot Tool

This tool shows concordance search results plotted in a 'barcode' format, with the length of the text normalized to the width of the bar and each hit shown as a vertical line within the bar. This allows you to see the position where search results appear in the individual texts of a corpus.



File Tool

This tool shows the contents of individual texts. This allows you to investigate in more detail the results generated in other tools of AntConc.



Cluster Tool

The tool shows contiguous (together in a sequence) word patterns based on the search condition. This allows you to see common phrases that appear in the target texts.

File Edit Settings Help

Target Corpus Name: AmE06_Learned N-Gram Types 54736 N-Gram Tokens 161389 Page Size 100 hits 1 to 100 of 94736 hits

Files: 80

Type	Rank	Freq	Range
1 of the	1	1460	80
2 in the	2	1008	80
3 to the	3	507	80
4 and the	4	379	76
5 on the	5	294	75
6 to be	6	272	74
7 it is	7	260	62
8 for the	8	250	70
9 that the	9	248	70
10 as a	10	233	71
11 of a	11	222	67
12 by the	12	208	68
13 from the	13	204	69
14 with the	13	204	70
15 is the	15	203	57
16 in a	16	198	66

Search Query: Words - Case - Regexp N-Gram Size 2 Open Slots 0 Min. Freq 1 Min. Range 1

Sort by Frequency Invert Order

Progress 100%

Time taken (creating ngram results): 2.3877 sec

N-Gram Tool

This tool scans the entire corpus for all 'N'-sized clusters (e.g., 2-word clusters, 3-word clusters, ...). This allows you to find common expressions in a corpus.

File Edit Settings Help

Target Corpus Name: AmE06_Learned Collocate Types 9 Collocate Tokens 120 Page Size 100 hits 1 to 9 of 9 hits

Files: 80

Collocate	Rank	Freq(Scaled)	Freq	Freq.R	Range	Likelihood	Effect
1 learning	1450	8	1	3	27.680	3.526	
2 chemical	570	5	1	2	24.376	4.288	
3 large	660	1	5	3	22.705	4.077	
4 globalization	230	3	1	1	20.126	5.012	
5 attends	10	1	1	1	20.110	8.536	
6 postulate	20	1	1	1	17.125	7.536	
7 assumption	160	1	2	1	15.533	5.121	
8 gaseous	30	1	1	1	15.444	6.951	
9 the	103760	56	30	31	15.024	0.621	

Search Query: Words - Case - Regexp Window Span From 5L To 5R Min. Freq 1 Min. Range 1

Sort by Likelihood Invert Order

Progress 100%

Time taken (creating collocate results): 6.2583 sec

Collocate Tool

This tool shows words that appear frequently within a certain distance of the search term (i.e., collocates). This allows you to find which words co-occur with other words in a corpus.

File Edit Settings Help

Target Corpus Name: AmE06_Learned Entries 15887 Total Freq 161469 Page Size 100 hits 1 to 100 of 15887 hits

Files: 80

Type	Rank	Freq	Range	NormFreq	NormRange
1 the	1	11876	80	64260.013	1.000
2 of	2	6649	80	41178.183	1.000
3 and	3	5677	80	31442.568	1.000
4 to	4	4405	80	24803.523	1.000
5 in	5	3986	80	24561.990	1.000
6 a	6	3562	80	22059.962	1.000
7 that	7	2138	80	13240.932	1.000
8 is	8	2016	79	12485.369	0.988
9 for	9	1450	80	8980.052	1.000
10 as	10	1402	80	8682.761	1.000
11 s	11	1138	78	7047.792	0.975
12 with	12	1069	80	6620.466	1.000
13 are	13	1067	79	6608.080	0.975
14 by	14	1014	80	6279.843	1.000
15 this	15	963	79	5963.995	0.988
16 in	16	937	77	5802.921	0.963

Search Query: Words - Case - Regexp Min. Freq 1 Min. Range 1

Sort by Frequency Invert Order

Progress 100%

Time taken (creating word list results): 0.374 sec

Word List Tool:

This tool counts all the words in the corpus and presents them in an ordered list. This allows you to find which words are the most frequent in a corpus.

File Edit Settings Help

Target Corpus Name: AmE06_Learned Keyword Types 380/15887 Keyword Tokens 32670/161469 Page Size 100 hits 1 to 100 of 380 hits

Files: 80

Type	Rank	Freq	Tar	Freq Ref	Range	Ref	Keyness (Likelihood)	Keyness (Effect)
1 of	1	6649	30331	80	500	550.584	0.067	
2 x	2	268	331	14	31	339.754	0.083	
3 is	3	2016	8420	79	488	255.347	0.023	
4 learning	4	145	196	14	44	169.355	0.002	
5 are	5	1067	4226	78	460	168.111	0.013	
6 in	6	3966	19823	80	500	165.568	0.043	
7 et	7	131	163	20	32	164.941	0.002	
8 k	8	136	181	11	44	161.163	0.002	
9 these	9	459	1406	76	379	158.264	0.006	
10 e	10	182	343	43	115	147.247	0.002	
11 species	11	109	138	9	28	135.149	0.001	
12 which	12	980	2066	77	446	132.267	0.007	
13 g	13	128	198	33	65	130.605	0.002	
14 english	14	135	226	15	69	126.211	0.002	
15 language	15	140	251	22	85	120.630	0.002	
16 milk	16	40	128	4	29	102.729	0.001	

Search Query: Words - Case - Regexp Min. Freq 1 Min. Range 1

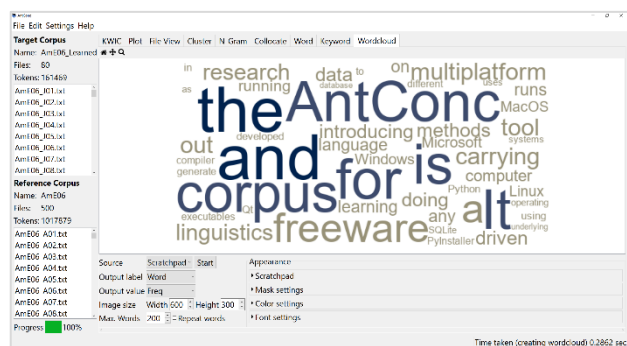
Sort by Likelihood Invert Order

Progress 100%

Use keyword cache: Time taken (creating keyword results): 2.6185 sec

Keyword List Tool:

This tool shows words that appear unusually frequently in the target corpus in comparison with the words in the reference corpus based on a statistical measure (i.e., 'keywords'). These words can be considered to be characteristic of the target corpus. The settings can also be changed to show words that appears unusually infrequently in the target corpus compared with the reference corpus (i.e., 'negative keywords').

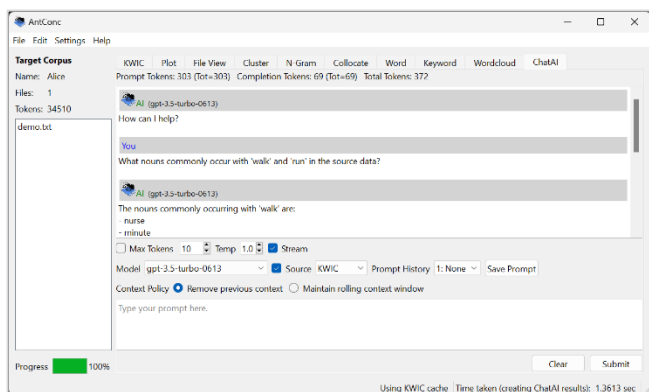


Wordcloud Tool:

This tool visualizes the results generated by KWIC, File, Cluster, N-Gram, Collocate, Word, and Keyword tools as well as a "Scratchpad" of plain text in the form of a 'word cloud'. Wordclouds are often used as aesthetically pleasing visualizations, where words are laid out in a viewing area or 'themed' image mask and sized according to a property (e.g., word frequency). Care should be taken when using wordclouds for linguistic analysis, as the visualization necessitates distorting word sizes to fit the viewing area.

Chat AI:

This tool gives you access to closed-source, open-source, and open-weights Large Language Models (LLMs) through a chat-like interface. When 'chatting' with the LLMs, you can choose to interact with the LLM directly, or you can supply the LLM with results generated by other AntConc tools (e.g. the KWIC tool) and ask it to utilize that information in its responses.



KWIC ('Key-Word-In-Context') Tool

This tool shows search results in a concordance or 'KWIC' (Key-Word-In-Context) format. This allows you to see how words and phrases are commonly used in a corpus of texts.

The following steps produce a set of concordance lines from a corpus and demonstrate the main features of this tool.

- 1) Select a corpus using the "Corpus Manager" available from the File menu. Alternatively, create a quick corpus by choosing the "Open File(s) as Quick Corpus" from the file menu. The files contained in the corpus are shown in the left frame of the main window under "Target Corpus".
- 2) Enter a search query in the search box. See the 'SEARCH OPTIONS' section in this document for an explanation of the "Words", "Case", and "Regex" search term options.
- 3) Choose the size of the results set to be presented using the "Result Set" combobox widget.
- 4) Choose the number of words to be displayed on either side of the search term using the "Context Size" spinbox widget.
- 5) Click on the "Start" button to start the search and wait for the results to be displayed.
- 6) Use the "Sort options" to rearrange the concordance lines by row ID, file name, or the position of the word. The first widget allows you to quickly order the concordance lines by the words to right or left of the center word, or choose no ordering, or using a custom order. The next three widgets allow you to choose the order parameters: 1L, 2L... are words to the left of the target word, 'C' is the center word, and 1R, 2R... are words to the right of the center word. The final widget allows you to order the results

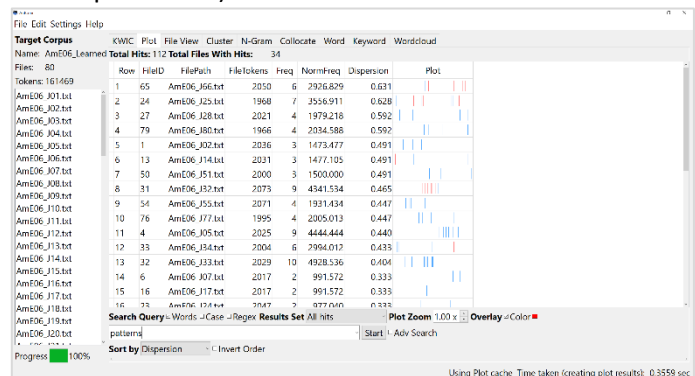


by the frequency of the pattern determined by the sorting parameters (the "Order by freq" option) or alphabetically (the "Order by value" option). The default "Order by freq" option is strongly recommended as it will allow you to easily identify the most commonly occurring patterns in the target corpus. After adjusting the sort options, click on the "Start" button to regenerate the concordance lines.

- 7) The total number of concordance lines generated (Total Hits) is shown at the top of the tool window. When no hits are found, a warning will be shown on the screen.
- 8) Double-clicking on any cell in the results window will cause the software to jump to the File tool (see the relevant section of this document) where you can view the hit exactly as it appears in context in the original file.
- 9) If you want to filter the results, select the desired rows, and then press the "Delete" key to remove the selected rows or press "SHIFT+ Delete" to keep the selected rows removing all the others.
- 10) Advanced searches are available with this tool. Several menu preferences are also available with this tool. (See the relevant sections in this document for explanations).

Plot Tool

This tool shows concordance search results plotted in a 'barcode' format, with the length of the text normalized to the width of the bar and each hit shown as a vertical line within the bar. This allows you to see the position where search results appear in the individual texts of a corpus. An example of the use of the Plot Tool is in determining where specific content words appear in a technical paper, or where an actor or story character appears through a play or novel.



The following steps produce a set of plot results from a corpus and demonstrate the main features of this tool.

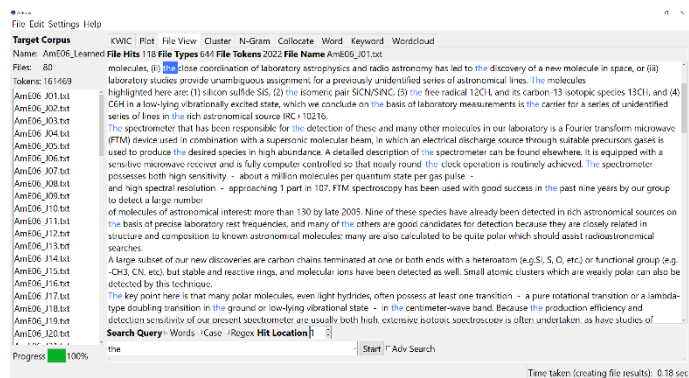
- 1) Select a corpus using the "Corpus Manager" available from the File menu. Alternatively, create a quick corpus by choosing the "Open File(s) as Quick Corpus" from the file menu. The files contained in the corpus are shown in the left frame of the main window under "Target Corpus".
- 2) Enter a search query in the search box. See the 'SEARCH OPTIONS' section in this document for an explanation of the "Words", "Case", and "Regex" search term options.
- 3) Choose the size of the results set to be presented using the "Result Set" combobox widget.
- 4) Use the "Plot Zoom" widget to control the size of the plot and the degree of detail to be shown.
- 5) Click on the "Start" button to start the search and wait for the results to be displayed.
- 6) Use the "Sort by" option to rearrange the plots according to the various parameters shown.
- 7) The total number of hits and total number of plots are shown at the top of the tool window. When no hits are found, a warning will be shown on the screen.
- 8) Double-clicking on any cell in the results window will cause the software to jump to the File tool (see the relevant section of this document) where you can view the hit exactly as it appears in context in the original file.
- 9) By checking the "Overlay" option and choosing an appropriate color (by clicking on the color box), existing results can be overlaid with new results for different searches. This allows you to see how different search queries are related and/or overlap.
- 10) Advanced searches are available with this tool. Several menu preferences are also available with this tool. (See the relevant sections in this document for explanations).

File Tool

This tool shows the text of individual files. This allows you to investigate in more detail the results generated in other tools of *AntConc*.

The following steps produce a view of the original file and demonstrate the main features of this tool.

- 1) Select a corpus using the "Corpus Manager" available from the File menu. Alternatively, create a quick corpus by choosing the "Open File(s) as Quick Corpus" from the file menu. The files contained in the corpus are shown in the left frame of the main window under "Target Corpus".
- 2) Double-click a file in the "Target Corpus" list on the left of the main window to view its contents. Alternatively, select a file in the "Target Corpus" list and click "Start" in the tool interface. The File tool will automatically be selected, and the contents of the file will be shown.
- 3) To highlight search query results in the display, enter a search query and click "Start". See the relevant section in this document explaining the "Words", "Case", and "Regex" search term options. Words in the file that match the query will be automatically highlighted.
- 4) Use the "Hit Location" widget to jump to different hits in the file. Alternatively, use the keyboard shortcut for your operating system (see the SHORTCUTS section).
- 5) Advanced searches are available with this tool. Several menu preferences are also available with this tool. (See the relevant sections in this document for explanations).

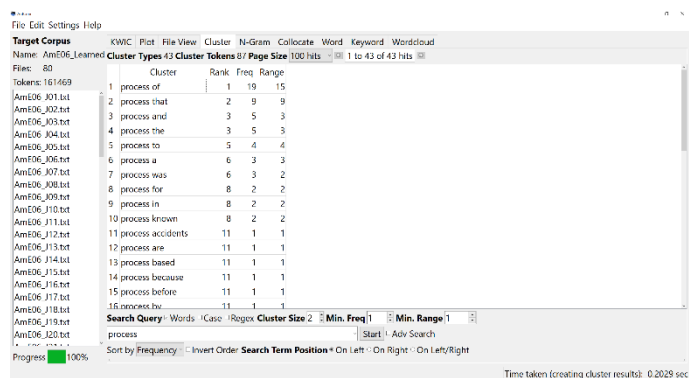


Cluster Tool

The tool shows adjacent word groups based on the search condition. This allows you to see how words and phrases are commonly used in a corpus of texts. In some cases, this tool can be seen as summarizing the results generated in the KWIC tool.

The following steps produce a set of clusters and demonstrate the main features of this tool.

- 1) Select a corpus using the "Corpus Manager" available from the File menu. Alternatively, create a quick corpus by choosing the "Open File(s) as Quick Corpus" from the file menu. The files contained in the corpus are shown in the left frame of the main window under "Target Corpus".
- 2) Enter a search query in the search box. See the 'SEARCH OPTIONS' section in this document for an explanation of the "Words", "Case", and "Regex" search term options.
- 3) Choose the various parameters to filter the number of clusters to be shown: cluster size (number of words in the cluster), minimum cluster frequency, and minimum cluster range (number of files)
- 4) Click the "Start" button to start the search and wait for the results to be displayed.
- 5) Use the "Sort by" option to rearrange the ordering of the results.
- 6) Use the "Search Term Position" options to determine if the results will show clusters that start with the search query terms ("On Left"), end with the search query terms ("On Right") or can either start or end with the search query terms ("On Left/Right").
- 7) The total number of cluster types ("Cluster Types") and combined total count of all the cluster tokens ("Cluster Tokens") are shown at the top of the tool window. When no hits are found, a warning will be shown on the screen.



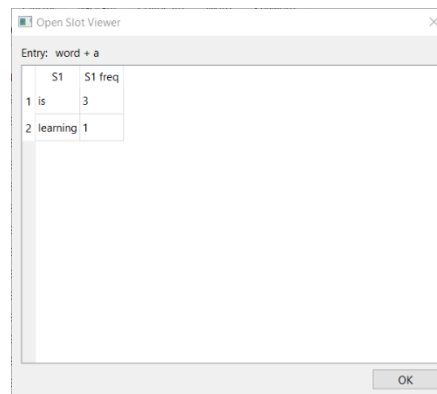
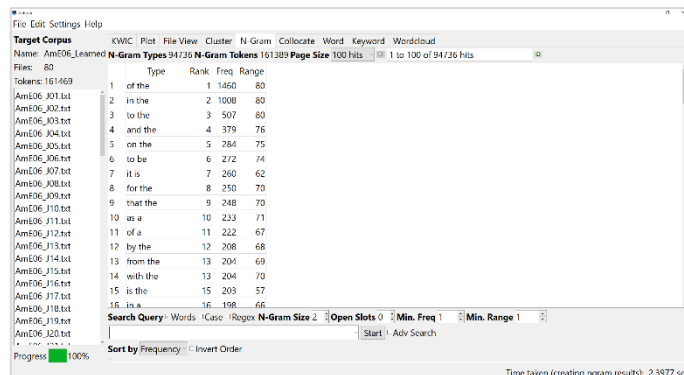
- 8) Double-click on any cell in the results window to cause the software to jump to the KWIC tool (see the relevant section of this document) where you can view concordance lines for that cluster across the whole corpus.
- 9) Advanced searches are available with this tool. Several menu preferences are also available with this tool. (See the relevant sections in this document for explanations).

N-Gram Tool

This tool scans the entire corpus for all 'N'-sized clusters (e.g., 2-word clusters, 3-word clusters, ...). This allows you to find common expressions in a corpus.

The following steps produce a set of n-grams and demonstrate the main features of this tool.

- 1) Select a corpus using the "Corpus Manager" available from the File menu. Alternatively, create a quick corpus by choosing the "Open File(s) as Quick Corpus" from the file menu. The files contained in the corpus are shown in the left frame of the main window under "Target Corpus".
- 2) Choose the various parameters to filter the number of n-grams to be shown: n-gram size (number of words), open slots (number of slots in the n-gram that can take multiple values), minimum n-gram frequency, and minimum n-gram range (number of files).
- 3) Click on the "Start" button to start the search and wait for the results to be displayed. If a search query is entered, only n-grams that match the query will be shown. See the 'SEARCH OPTIONS' section in this document for an explanation of the "Words", "Case", and "Regex" search term options.
- 4) Use the "Sort by" option to rearrange the ordering of the results.
- 5) The total number of n-gram types ("N-Gram types") and combined total count of all the n-gram tokens ("N-Gram Tokens") are shown at the top of the tool window. When no hits are found, a warning will be shown on the screen.
- 6) Double-click on any cell in the results window to cause the software to jump to the KWIC tool (see the relevant section of this document) where you can view concordance lines for that n-gram across the whole corpus.
- 7) For entries that contain open slots, Shift + Double-click on the "Type" entry in the results window to show the variants that can fit in the open slots via the "Open Slot Viewer" and two associated statistics that show the degree of variation for the slot. The *_TT value is the type/token ratio for the slot, and the *_ent value is the Entropy value for the slot.
- 8) Advanced searches are available with this tool. Several menu preferences are also available with this tool. (See the relevant sections in this document for explanations).



Collocate Tool

This tool shows words that appear frequently within a certain distance of the search term (i.e., collocates). This allows you to find which words co-occur with other words in a corpus.

The following steps produce a set of collocates and demonstrate the main features of this tool.

- 1) Select a corpus using the "Corpus Manager" available from the File menu. Alternatively, create a quick corpus by choosing the "Open File(s) as Quick Corpus" from the file menu. The files contained in the corpus are shown in the left frame of the main window under "Target Corpus".
- 2) Choose the various parameters to filter the types of collocates to be shown: window span (possible positions left and right of the search query terms, where the collocate can appear), minimum collocate frequency, and minimum collocate range (number of files).
- 3) Enter a search query in the search box. See the 'SEARCH OPTIONS' section in this document for an explanation of the "Words", "Case", and "Regex" search term options.
- 4) Click on the "Start" button to start the search and wait for the results to be displayed.
- 5) Use the "Sort by" option to rearrange the ordering of the results.
- 6) The total number of collocate types ("Collocate Types") and combined total count of all the collocate tokens ("Collocate Tokens") are shown at the top of the tool window. When no hits are found, a warning will be shown on the screen.
- 7) Double-click on any cell in the results window to cause the software to jump to the KWIC tool (see the relevant section of this document) where you can view concordance lines for that collocate across the whole corpus.
- 8) Advanced searches are available with this tool. Several menu preferences are also available with this tool. (See the relevant sections in this document for explanations).

The screenshot shows the Collocate Tool window with the following data:

Token	Collocate	Rank	Freq(Scaled)	FreqL	FreqR	Range	Likelihood	Effect
AmE06_001.txt	1 learning		1450	8	1	3	27.680	3.576
AmE06_002.txt	2 chemical		570	5	1	2	24.376	4.288
AmE06_003.txt	3 large		660	1	5	3	22.705	4.077
AmE06_004.txt	4 globalization		230	3	1	1	20.126	5.012
AmE06_005.txt	5 attitude		10	1	1	1	20.110	6.536
AmE06_006.txt	6 speculate		20	1	1	1	17.123	7.536
AmE06_007.txt	7 assimilation		160	1	2	1	15.533	5.123
AmE06_008.txt	8 gaseous		30	1	1	1	15.444	6.951
AmE06_009.txt	9 the		103760	56	30	31	15.024	0.621

Word Tool

This tool counts all the words in the corpus and presents them in an ordered list. This allows you to find which words are the most frequent in a corpus.

The following steps produce a word list and demonstrate the main features of this tool.

- 1) Select a corpus using the "Corpus Manager" available from the File menu. Alternatively, create a quick corpus by choosing the "Open File(s) as Quick Corpus" from the file menu. The files contained in the corpus are shown in the left frame of the main window under "Target Corpus".
- 2) Click on the "Start" button to start the processing and wait for the results to be displayed. If a search query is entered, only words that match the query will be shown. See the 'SEARCH OPTIONS' section in this document for an explanation of the "Words", "Case", and "Regex" search term options.
- 3) Use the "Sort by" option to rearrange the ordering of the results.
- 4) The total number word types ("Word types") and combined total count of all the word tokens ("Word Tokens") are shown at the top of the tool window. When no hits are found, a warning will be shown on the screen.

The screenshot shows the Word Tool window with the following data:

Token	Type	Rank	Freq	Range	NormFreq	NormRange
AmE06_001.txt	1 the		10376	80	64760.013	1.000
AmE06_002.txt	2 of		2 6649	80	41178.183	1.000
AmE06_003.txt	3 and		3 5077	80	31442.568	1.000
AmE06_004.txt	4 to		4 4005	80	24803.523	1.000
AmE06_005.txt	5 in		5 3966	80	24561.990	1.000
AmE06_006.txt	6 a		6 3562	80	22059.962	1.000
AmE06_007.txt	7 that		7 2138	80	13240.992	1.000
AmE06_008.txt	8 is		8 2016	79	12485.369	0.988
AmE06_009.txt	9 for		9 1450	80	8980.252	1.000
AmE06_010.txt	10 an		10 1402	80	8862.781	1.000
AmE06_011.txt	11 s		11 1138	78	7047.792	0.975
AmE06_012.txt	12 with		12 1069	80	6620.466	1.000
AmE06_014.txt	13 are		13 1067	78	6608.080	0.975
AmE06_013.txt	14 by		14 1014	80	6279.843	1.000
AmE06_016.txt	15 this		15 963	79	5963.993	0.988
AmE06_017.txt	16 it		16 937	77	5802.971	0.963

- 5) Double-click on any cell in the results window to cause the software to jump to the KWIC tool (see the relevant section of this document) where you can view concordance lines for that word across the whole corpus.
- 6) Advanced searches are available with this tool. Several menu preferences are also available with this tool. (See the relevant sections in this document for explanations).

Keyword Tool

This tool shows words that appear unusually frequently in the target corpus in comparison with the words in the reference corpus based on a statistical measure (i.e., 'keywords'). These words can be considered to be characteristic of the target corpus. The settings can also be changed to show words that appears unusually infrequently in the target corpus compared with the reference corpus (i.e., 'negative keywords').

Rank	Type	Freq_Tar	Freq_Ref	Range_Tar	Range_Ref	Keyness (Likelihood)	Keyness (Effect)
1	ct	6649	30331	80	500	550.584	0.067
2	x	268	331	14	31	339.754	0.003
3	is	2016	8420	79	488	255.347	0.023
4	learning	145	196	14	44	169.355	0.002
5	ane	1067	4236	78	468	168.111	0.013
6	in	3966	19923	80	500	165.568	0.043
7	et	131	163	20	32	164.941	0.002
8	k	136	181	11	44	161.163	0.002
9	these	459	1406	76	379	158.264	0.006
10	e	162	243	43	115	147.247	0.002
11	specks	109	138	9	28	135.149	0.001
12	switch	580	2066	77	446	132.267	0.007
13	g	138	198	33	65	130.600	0.002
14	english	135	226	15	69	126.211	0.002
15	language	140	251	22	85	120.630	0.002
16	cells	92	124	6	26	107.728	0.001

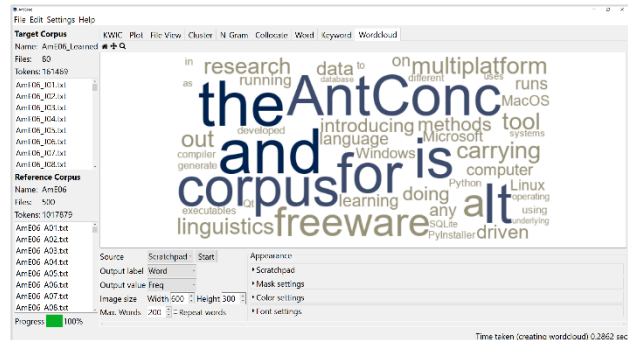
The following steps produce a keyword list and demonstrate the main features of this tool.

- 1) Create a quick corpus by choosing the "Open File(s) as Quick Corpus" option from the file menu. Alternatively, choose the "Corpus Manager" option from the file menu and make sure the "Target Corpus" option is selected. Then, select one of the available corpora or create your own from raw files or a word list (see the instruction under the Corpus Manager section of this help page for how to do this). This corpus will then serve as the target corpus for your analysis. The files contained in the corpus will be shown in the top left frame of the main window under "Target Corpus".
- 2) Choose a reference corpus by opening the "Corpus Manager" option from the file menu and checking the "Reference Option" option. Next, as in step 1, select one of the available corpora or create your own from raw files or a word list. The files contained in the corpus will be shown in the bottom left frame of the main window under "Reference Corpus".
- 3) Click on the "Start" button to start the processing and wait for the results to be displayed. If a search query is entered, only words that match the query will be shown. See the 'SEARCH OPTIONS' section in this document for an explanation of the "Words", "Case", and "Regex" search term options.
- 4) Use the "Sort by" option to rearrange the ordering of the results.
- 5) The total number keyword types ("Keyword types") and combined total count of all the word tokens ("Keyword Tokens") are shown at the top of the tool window. When no hits are found, a warning will be shown on the screen.
- 6) Double-click on any cell in the results window to cause the software to jump to the KWIC tool (see the relevant section of this document) where you can view concordance lines for that keyword across the whole corpus.
- 7) Advanced searches are available with this tool. Several menu preferences are also available with this tool. (See the relevant sections in this document for explanations).

Wordcloud Tool

This tool visualizes the results generated by KWIC, File, Cluster, N-Gram, Collocate, Word, and Keyword tools as well as a “Scratchpad” of plain text in the form of a ‘word cloud’. This is a grouping of words where the sizing of the words reflects a property of those words (e.g., frequency).

Wordclouds are often used as aesthetically pleasing visualizations, where words are laid out in a viewing area or ‘themed’ image mask and sized according to a property (e.g., word frequency). Care should be taken when using wordclouds for linguistic analysis, as the visualization necessitates distorting word sizes to fit the viewing area.



The following steps produce a word cloud and demonstrate the main features of this tool.

1. Choose a “Source” for the word cloud. This can be a “Scratchpad” of plain text (accessible as the first option in the “Appearance” list, or the output of the KWIC, File, Cluster, N-Gram, Collocate, Word, and Keyword tools.
2. Choose the properties from the source to display as “labels” and “values” in the word cloud. For the KWIC, File and Scratchpad sources, the properties of “Type” (Word) and “Freq” (Frequency) are chosen automatically.
3. Choose the image size. This will determine how many words can be placed in the image. Note that the image will be automatically scaled to the window display size.
4. Choose the maximum number of words to display in the word cloud. Depending on the number of items from the source and the other settings (e.g., the minimum font size), this value might not be reached.
5. Check the “Use stopwords” checkbox to remove stopwords from the word cloud.
6. Check the “Repeat words” checkbox to fill a much remaining space as possible in the word cloud image with existing words. Depending on other settings (e.g., the minimum font size), not all the space will be used.
7. Click “Start” to generate the word cloud.

Appearance Option

The appearance of the word cloud can be adjusted through the following settings:

Scratchpad: This is free writing area. If the scratchpad is chosen as the source, the words here (and their frequencies of occurrence) will be used to plot the wordcloud.

Mask settings: Use these settings to determine if the word cloud should be ‘masked’ and if so, which mask to use. Additional masks (.png and .svg files) can be added to the list by clicking the “Add” button. The included masks with .svg extensions are kindly provided by Font Awesome (fontawesome.com).

Color settings: Choose how to color the word cloud. Three options are available. If “Color theme” is chosen, you can pick a color theme from the dropdown list of options and the range value that determines which color(s) in the theme are used for which values in the word cloud. If “Text color” is chosen, you can pick a specific color from the colors available on the system. If “Mask color” is chosen, the colors of the words in the word cloud will match the colors used in the original mask image. The image background can be set to a specific color or made transparent.

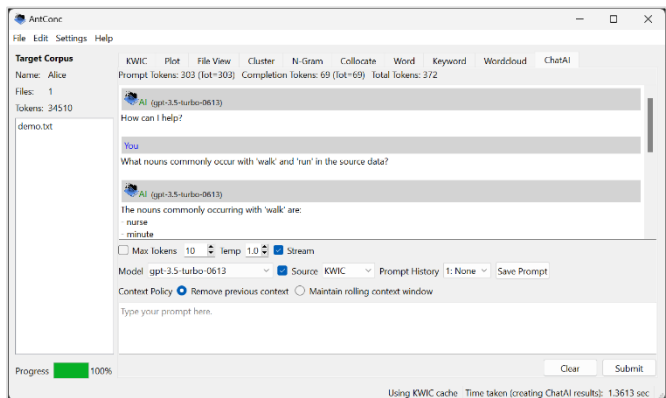
Font settings: Choose which font family and font size use in the word cloud. If the “Allow squeezing” option is selected, new words to be added to the word cloud that cannot fit in the remaining space will be incrementally “squeezed” (reduced in font size) until the fit the space available. This “squeezing” effect will distort the appearance of a word but will usually result in a more aesthetically pleasing result. It is also used when the “Repeat words” option is chosen to fill as

much of the remaining space as possible. The “Scaling Factor” setting determines the weighting given to the value (e.g., frequency) of the word to the ranking of that value. At 1.0, only the value is considered. At 0.0, only the rank is considered. The “H(orizontal)/V(ertical) Ratio” setting determines the probability of horizontal words plotted over vertical words. At 1.0, all words will be plotted horizontally. At 0.0, all words will be plotted vertically.

ChatAI Tool

This tool gives you access to closed-source, open-source, and open-weights Large Language Models (LLMs) through a chat-like interface. When 'chatting' with the LLMs, you can choose to interact with the LLM directly, or you can supply the LLM with results generated by other AntConc tools (e.g. the KWIC tool), and ask it to utilize that information in its responses.

The following steps demonstrate a typical interaction with ChatAI



1. If you want to use an LLM provided by OpenAI, in the ChatAI tool settings menu, paste in your Open API key. If you have already entered your API key into your environment settings (on Windows), the key will appear here automatically. **Note that you will be charged by OpenAI for all API interactions according to their pricing scheme: <https://openai.com/pricing>.** If you want to use an open source or open weights LLM model, you can skip this step.
2. In the ChatAI tool settings menu...
 - a. Select the default LLM that you want to use. Click "Update Models" to refresh the list of available models to reflect the most recent models available.
 - b. Select the "System Prompt" setting that you want to use during your interactions. The default system prompt is a typical standard: " You are a helpful assistant."
3. In the main ChatAI interface window...
 - a. Set the maximum number of tokens ("Max tokens") to be generated by the LLM. Deactivating this option will allow the LLM to generate its maximum output tokens.
 - b. Set the temperature (Temp) of the LLM. A setting of 0.0 will cause the LLM to always choose the most probable next predicted token. A setting of 2.0 will cause the LLM to choose from a wider range of probabilities for the next token, making it produce more creative, unpredictable responses.
 - c. Check the "Stream" option to allow the LLM to show the response as it is generated one token at a time. When unchecked, the complete response will be shown after it is generated.
 - d. Set the LLM that you want to use.
 - e. Choose whether to use the output from another AntConc tool by activating the "Source" option and selecting which tool to use.
 - f. Set the "Context Policy" to either "Remove previous context" so that each prompt submission will be treated as the start of a completely new conversation or "Maintain rolling context window" so that as much of the previous context as possible will be remembered until the LLM context size is reached. At this point, the earliest messages (prompts and responses) will be deleted from the context window before the new prompt is added. Note that the system prompt is never deleted.
4. Type in your prompt in the text area. Save your prompt by clicking the "Save Prompt" button if you think you will use it again. All save prompts are available in the "Prompt History" list. If you choose to supply results from another AntConc tool, they will be automatically appended to the end of the prompt (unseen). **As the LLM will remember the results supplied, after you supply the results once, you are recommended to deactivate the "Source" option to reduce the number of tokens supplied to the LLM.**

5. Click the "Submit" button or click "CTRL Return" to send your prompt to the LLM.
6. Wait for the LLM to respond. The response will appear in the upper window of the tool.
7. Continue to chat with the LLM based on the previous responses.
8. Click "Clear" to cause the LLM to forget the current conversation and start a new one.

SEARCH OPTIONS

Search queries can be composed of full words or word fragments, with or without wildcards. The basic syntax roughly follows the Common Elementary Query Language (CEQL). See <https://cwb.sourceforge.io/ceql.php> for more details). Searches can be either "case insensitive" (default) or "case sensitive" by activating or deactivating the "Case" search term option. Searches can also be made using full regular expressions by activating the "Regex" option. With "regex" option, each word-level regular expression needs to be separated by whitespace. To make regex expressions case-aware, select the "Case" option. For details on how to use regular expressions, consult one of the many texts on the subject, e.g., *Mastering Regular Expressions* (O'Reilly & Associates Press) or type "regular expressions" in a web search engine to find many sites on the subject (e.g., <http://www.regular-expressions.info/quickstart.html>). AntConc supports Perl regular expressions including Unicode character classes, e.g., `\p{Letter}`, even though the software is built using Python.

ADVANCED SEARCHES

By clicking on the "Advanced Search" button (available in all tools), more complex searches become possible.

- The "Search Query List" option allows you to import a set of search queries. You can do this in one of three ways: 1) Type each individual search query in the entry box and click "Add"; 2) Drag and drop the list of search queries into the viewer below the entry box; 3) Copy and paste the list of search queries into the viewer below the entry box. When dragging and dropping or pasting your list of queries, each line will be treated as a separate search query. This feature allows you to use a large set of search queries without having to retype them each time. Any search query accepted in the main interface can be used.
- The "Context Search List" option (not available in all tools) allows you to define search queries that must match within a certain context window around the main search term(s). For example, to search for "student" or "students" appearing at least three words to the left or right of the word "university," add "university" to the "Search Query List", and then add "student" and "students" to the "Context Search List" list. Finally, set the "Context Search List" "Window Span" as "From 3L" and "To 3R".
- The "SQL Search List" option (not available in all tools) allows you to adjust query conditions by applying conditions directly on tables in the database that stores the corpus through a series of 'join' operations. For example, the following entry in the list will join a custom "genres" table in the database (created through the Corpus Manager) with the main "corpus" table, applying a condition that the "genre" column entry for the file must be marked as "academic". The two tables are joined via the common "doc_id" column:

```
["genres", "genre = 'academic'", "doc_id"]
```

The format for the list entry should be a JSON array, with three components, "table" + "condition" + "join column".

MENU OPTIONS

Menu options are divided into three groups, "File", "Edit", "Settings" and "Help". The options available in each group will be described below.

<FILE>

- Open File(s) as 'Quick Corpus'...
 - This option is for quickly creating a temporary corpus. You will be asked to choose the files you want to add to your corpus. Then, the software will create a "temp" corpus using the default settings of the Corpus Manager and load this for immediate use. Any existing "temp" corpus will be overwritten.

- Open Corpus Manager...
 - This option opens the Corpus Manager, where you can choose prebuilt corpora from the default library, add or delete corpora from a user library, or create custom corpora from raw files. See the Corpus Manager for complete details.
- Swap Target/Reference Corpora
 - This option swaps the target and reference corpora allowing easy comparisons.
- Clear Tool/All Tools/All Tools and Files
 - These options will reset the interface.
- Save Current Tab Results...
 - This option allows results displayed in the main interface to be exported in a file format. Note that hidden columns will also be included. (Direct copying and pasting of results from the interface are also possible.)
- Save Current Tab Database Tables...
 - This option allows complete tables of results from the corpus database to be exported to a set of .csv files. All relevant information about results can be found in these files.
- Import Settings From File.../Export Settings To File...
 - These options allow the state of the software to be saved and reloaded at a different time.
- Restore Default Settings
 - This option resets the state of the software to when it was first installed. All custom settings are lost.

<EDIT>

- Select All
 - This option selects all results in the results window. The same effect can be achieved using the standard keyboard shortcut for "Select All". See the SHORTCUTS section for more details.
- Copy
 - This option selects any text in the results window. The same effect can be achieved using the standard keyboard shortcut for "Copy". See the SHORTCUTS section for more details.

<SETTINGS>

- Global Settings (applied to all tools in the interface)
 - **Colors** - This setting decides the main highlight color (e.g., for highlighted words in the File tool) and the color indicators for the Corpus Manager Pre-Built Corpus Library.
 - **Files** - This setting decides how the paths to files are shown. Also, this setting determines which file types are used as defaults in File Open dialogs and file drop options. This setting is also used to decide if encoding errors are shown or ignored when creating corpora from raw files.
 - **Fonts** - This setting decides the font family, size, and style of the font for the main interface.
 - **Language Direction** - This setting decides how to display results (especially for the KWIC concordance tool) depending on the language direction. For example, choose the default "Left-to-right" option for language such as English. Choose the "Right-to-left" option for languages such as Arabic. Check the 'Arabic' checkbox for smooth processing of Arabic in the Wordcloud tool.
 - **Restore Settings** - This setting decides if the settings will be automatically saved and restored when AntConc is restarted.
 - **Searches** - This setting lists all wildcards available in the system (note that these cannot be edited).
 - **Statistics** - This setting decides how values are displayed through normalization and floating-point precision settings.

- **Tags** - This setting decides how word information is displayed in the interface depending on the corpus currently loaded. For a fully tagged corpus, the options will be "Type", "POS", "Type+POS", and "headword" (lemma).
- **Tool Filters** - This setting decides if only words in the selected file will be shown or hidden in the respective tools. When the "Hide words in file" option is chosen, the selected file serves as a "stop list".
- **Tool Settings**
 - **KWIC**
 - **Display Type** - decides which word-level information (type, POS, headword) will be displayed.
 - **Display Options** - decides the colors used to highlight the sort order.
 - **Other Options**
 - Choose to show or hide the file names in the display.
 - Choose to show or hide the search term in the display. This option is useful for allowing instructors to quiz students on possible words to fit the gap.
 - **Plot**
 - **View Style** - decides which view to use (table/graphic or graphic)
 - **Display Options** - decides how results are displayed.
 - **Statistics** - decides the parameters for determining the dispersion measure.
 - **Other Options** - decides various parameters for sizing/displaying the plot graphs.
 - **File**
 - **Display Type** - decides which word-level information (type, POS, headword) will be displayed.
 - **Cluster**
 - **Display Type** - decides which word-level information (type, POS, headword) will be displayed.
 - **Display Options** - decides what information is shown in the results window.
 - **Filter Options** - decides if clusters can only span cross whitespace boundaries or can include other characters (e.g., punctuation)
 - **N-Gram**
 - **Display Type** - decides which word-level information (type, POS, headword) will be displayed.
 - **Display Options** - decides what information is shown in the results window.
 - **Filter Options** - decides if clusters can only span cross whitespace boundaries or can include other characters (e.g., punctuation)
 - **Collocate**
 - **Display Type** - decides which word-level information (type, POS, headword) will be displayed.
 - **Likelihood Measure + Threshold**
 - Choose the statistic and cut-off point (threshold) for inclusion of words in the collocates list. Words below the cut-off-point are deemed to appear frequently together with the query term by chance.
 - **Effect Size Measure + Threshold**
 - Choose the statistic used determine the strength of relationship between the query term and collocate and a cut-off point (threshold) for inclusion of words that meet the minimum effect size.
 - **Word**
 - **Display Type** - decides which word-level information (type, POS, headword) will be displayed. Options that show information in brackets will collate that information and present it a family. See the examples below for an illustration for what happens with

POS tagged data (i.e., data for which the type and POS information are provided) and lemmatized data (i.e., data for which the type and headword information are provided)

- Type: this option will combine words with same type but different POS tags or lemma headwords into a single entry and sum the frequencies and calculate the range values for this entry
- Type+POS: this option will treat words with the same type but different POS tags as different entries. The frequencies and range values will be independent.
- Type+[POS]: this option will combine words with the same type but different POS tags into a single entry and sum the frequencies and calculate the range values for this entry. The option will also show all the POS variants and their separate frequency counts that combine to make up the total.
- Type+Headword: this option will treat words with the same type but different headword (lemma) tags as different entries. The frequencies and range values will be independent.
- Headword: this option will combine all words from the same lemma family into a single headword entry and sum the frequencies and calculate the range values for this entry
- Headword+[Type]: this option will combine words from the same lemma family into a single entry and sum the frequencies and calculate the range values for this entry. The option will also show all the lemma family variants and their separate frequency counts that combine to make up the total.
- Display Options - decides what information is shown in the results window.
- Keywords
 - Display Type - decides which word-level information (type, POS, headword) will be displayed. See the entry for Word for an explanation of what the options represent.
 - Display Options - decides what information is shown in the results window.
 - Negative Keywords - decides to show words in the target corpus that appear unusually *infrequently* in the target corpus compared with the reference corpus.
 - Likelihood Measure + Threshold - decides the statistic and cut-off point for inclusion of words in the keyword list. Words below this cut-off-point are deemed to appear frequently in the target corpus compared with the reference corpus by chance.
 - Effect Size Measure + Threshold - decides the measure used to determine the strength of keyness and a cut-off point for inclusion of words that meet the minimum effect size.

[Appropriate effect size measures are still being debated in the field, so the default setting is to show all values for this measure. With the default settings, keywords are ranked according to their likelihood measure scores. This equates to ranking keywords according to p-values, which raises several questions/problems. However, it is the current standard in the field and results tend to show that ranking by likelihood leads to more intrinsically intuitive results than those generated when an effect size measure is used. The current selection of likelihood measures and effect size measures are inspired by the work of Andrew Hardie of Lancaster University.]
- Wordcloud
 - Color Theme Options - decides what color themes are available in the tool controller.
 - Perceptually uniform sequential
 - These themes have incremental changes in lightness and often saturation of color that are perceived to be uniform. This makes them suitable to represent changes in frequency or other values.
 - Sequential

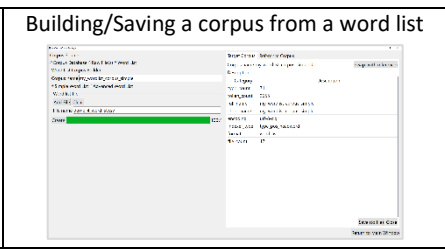
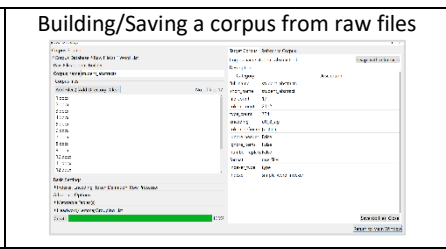
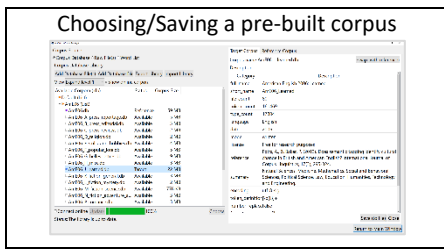
- These themes have incremental changes in lightness and often saturation of color. This makes them suitable to represent changes in frequency or other values.
 - Qualitative
 - These themes contain miscellaneous colors. This makes them unsuitable for most cases. The exception is when you want to produce visually appealing results with no connection between the color and the value being represented.
 - Mask Theme Options - decides what mask themes are available in the tool controller.
- ChatAI
 - API Settings - decides the way ChatAI utilizes APIs.
 - Show API warning on first use
 - Show a warning when first using the ChatAI tool to remind the user that they will be charged by OpenAI for all API interactions.
 - OpenAI API Key
 - An area to input your OpenAI API key. This is required to use LLMs provided by OpenAI. **Note that you will be charged by OpenAI for all API interactions according to their pricing scheme: <https://openai.com/pricing>.**
 - Model Settings
 - Default Model
 - This is the default model shown in the main interface.
 - Prompt Settings
 - System prompt
 - This is the system prompt that will guide the LLM during a single chat interaction. It can be used to strengthen the skills of the LLM (e.g. explain what expertise it is supposed to have), determine the style of interaction (e.g. formal or informal), and even what in way it should proceed (e.g. solving problems slowly in a stepwise fashion).

< HELP >

- Show Help Page
 - This option shows the help guide as a PDF file.
- Show License
 - This option shows the license agreement that you agree to when using the software.
- Show Version History
 - This option shows the complete history of releases, detailing new features, bug fixes, and major updates.
- About AntConc
 - This option shows the release version, release date, copyright information, and acknowledgments for the software.

Corpus Manager

The Corpus Manager is a multi-purpose tool used to load and save pre-built corpus databases, create and save a new corpus from raw (.txt, .srt, ...), Word, or PDF files, or create and save a new corpus from a simple of advanced word list. The three different scenarios are explained below.

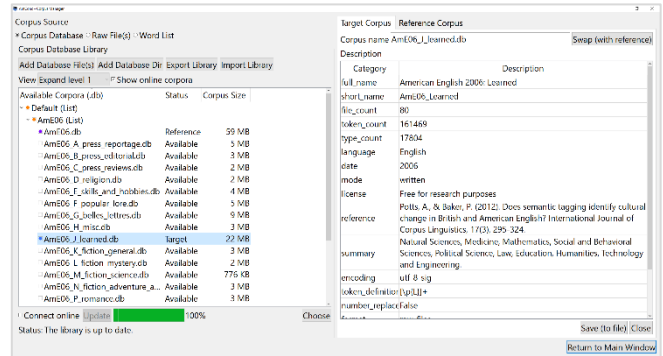


Choosing/Saving a pre-built corpus database

Choose the "Corpus Database" corpus option.

1. This option shows a list of pre-built corpus databases available in the "Corpus Library" of AntConc in the left windowpane in a tree layout.

- The list shows all "Default" corpora that are available with AntConc via an online repository. The list also shows all "User" corpora that you have created in the Corpus Manager (see below) or loaded into the library. To hide corpora in the online repository that have now been downloaded, uncheck the "Show online corpora" box.
- By default, lists of corpora are collapsed to their top level. Clicking on the list arrow will expand the list to see all the entries. Clicking the arrow again will collapse the list back to its initial state.
- Corpora that are installed and 'ready' to use are marked green (●). Others that 'available' for download from the online repository appear unmarked (□). Orange indicates that the list has some marked and unmarked corpora (◐).
- To download a corpus from the online repository, click its indicator. The indicator will change from 'available' (□) to 'ready to download' (◐). Next, activate the "Connect online" checkbox and click the "Update" button. The library list will refresh and show the new status of all the corpora.
- To delete a 'ready' corpus from the library, click on its indicator. The indicator will change from 'ready' (◐) to 'delete' (●). Next, click the "Update" button. The library list will refresh and show the new status of all the corpora.
- To select a "Target Corpus", first select "Target Corpus" tab in the right hand of the window. Next, double click the name of the corpus (not the indicator). The corpus indicator will change from 'ready' (◐) to 'Target' (◑). The details of the corpus will appear in the "Target Corpus" tab.
- To select a "Reference Corpus", first select "Reference Corpus" tab in the right hand of the window. Next, double click the name of the corpus (not the indicator). The corpus indicator will change from 'ready' (◐) to 'Reference' (◒). The details of the corpus will appear in the "Reference Corpus" tab.



Available Corpora (db)	Status	Corpus Size
Default (List)		
AmE06 (List)		
BE06 (List)		
demo.db	Ready	1 MB
User (List)		
newspaper_articles.db	Ready	1 MB
student_essays.db	Ready	3 MB

Available Corpora (db)	Status	Corpus Size
Default (List)		
AmE06 (List)		
AmE06.db	Ready	58 MB
AmE06_A_press_reportage.db	Ready	5 MB
AmE06_B_press_editorial.db	Ready	3 MB
AmE06_C_press_reviews.db	Ready	2 MB
AmE06_D_religion.db	Available	2 MB
AmE06_E_skills_and_hobbies.db	Available	4 MB
AmE06_F_popular_lore.db	Available	5 MB
AmE06_G_belles_lettres.db	Available	9 MB
AmE06_H_misc.db	Available	3 MB
AmE06_J_learned.db	Ready	9 MB
AmE06_K_fiction_general.db	Available	3 MB
AmE06_L_fiction_mystery.db	Available	2 MB
AmE06_M_fiction_science.db	Available	776 KB
AmE06_N_fiction_adventure_and_wester...	Available	3 MB
AmE06_P_romance.db	Available	3 MB
AmE06_R_humor.db	Available	1 MB

- Pre-built corpus databases (e.g., created by other users of AntConc) can be loaded directly into the Corpus Database Library by clicking the "Add Database File(s)" or "Add Database Dir" buttons and selecting the relevant file(s) or folder. All corpora loaded this way will appear in the "User" list.
- The entire Corpus Database Library can be exported for backup by clicking the "Export Library" button or restored from a backup by clicking the "Import Library" button. When restoring a backup library, current

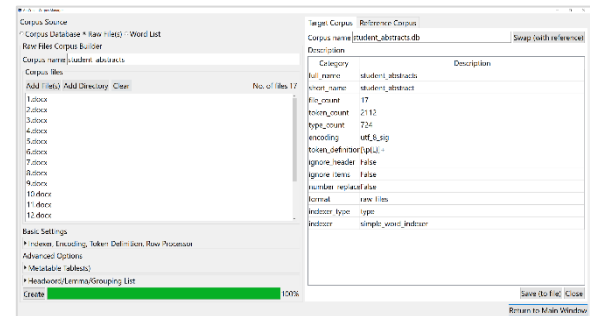
corpora with the same name will be overwritten with the backup, but other corpora will remain unchanged. This feature is useful for users on MacOS and Linux systems who want to create a backup of the Corpus Database Library before updating AntConc to a new version. This is because the operating system will delete all files before the update is made.

4. Any single corpus can be saved to a new location by activating it as "Target" or "Reference" corpus and then clicking on the "Save" button at the bottom of the right windowpane and saving the file.
5. Click the "Return to Main Window" button at the bottom right of the Corpus Manager to return to the main window and start using a selected corpus. The files in the corpus will be shown in the left pane of the main window.

Building/Saving a corpus from raw files

Choose the "Raw Files" corpus option. Several 'builder options' will appear in the left windowpane. Follow the steps below:

1. Choose a name for your custom corpus. A default name is provided.
2. Choose the files to be included in your corpus.
 - a. Use the "Add File(s)" or "Add Directory" options to choose your raw files. You can choose from a wide variety of text formats, including plain text (.txt, .srt, .sub), table files (.csv, .tsv), HTML/XML files (.html, .xml), WORD (.docx) and PDF (.pdf) files.
3. Adjust one or more of the basic settings as necessary (OPTIONAL)
 - a. Decide the indexer used to process the raw files.
 - i. For simple files with no annotation or part-of-speech (POS) tagging, the "simple_word_indexer" will work well.
 - ii. For simple files that have been part-of-speech (POS) tagged, the "simple_word_pos_headword_indexer" will work well.
 - iii. For simple files that have been part-of-speech (POS) tagged using the Biber Tagger, the "simple_word_bibertag_indexer" will work well.
 - iv. For other files with more complex structures, different indexers will become available over time.
 - b. Choose the character encoding of the files.
 - i. The default option (UTF-8) is the standard in the field. Many other encodings are also available in the "Other" options.
 - If you are unsure of what encoding to use, you are recommended to initially choose the default UTF-8 option. Later, if you see an encoding error when trying to process your files or find that your files appear corrupted in the various tool displays, it probably means that the encoding is wrong, and you should determine the correct encoding to use. For Word (.docx) and PDF (.pdf) files, the default encoding should generally be fine.
 - ii. For more information on the Unicode standards see:
 - <http://www.cs.tut.fi/~jkorpela/unicode/guide.html>
 - <http://www.unicode.org/>
 - <http://www.unicode.org/Public/5.0.0/ucd/UCD.html>
 - <http://www.unicode.org/Public/UNIDATA/PropList.txt>
 - <http://www.unicode.org/charts/>
 - c. Decide the definition of a token (word) in the corpus.
 - i. In some cases, you may only want to include tokens (words) comprised of the letters a-zA-Z in your corpus, whereas other times, you might want to include tokens comprised of letters, numbers, apostrophes etc. The token definition determines what tokens your corpus is comprised of.



- ii. Once the corpus is built, you will be able to form search queries on the main corpus using these headword/lemma/grouping terms as conditional elements.

5. Create the corpus

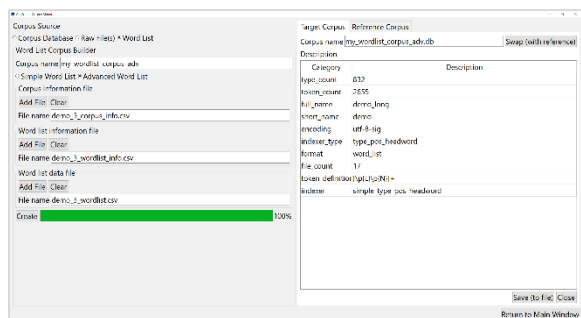
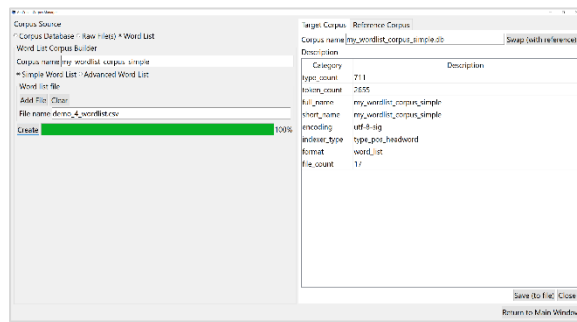
- a. To complete the corpus building process, click the "Create" button.
- b. Once the corpus is created, a basic description will be displayed in the right windowpane.
- c. The corpus will be available in the "Corpus Library" and can be saved to another location by clicking on "Save" button next to the "Active Corpus Database" label.

Building/Saving a corpus from a word list

Choose the "Word List" corpus option. Several 'builder options' will appear on the top-left of the window. Follow the steps below:

1. Choose a name for your custom corpus. A default name is provided.
2. Choose which type of word list you want to load.
 - a. Choose the "Simple Word List" option to build a corpus from a simple list of type, frequency, and optional range (document frequency) values. The format for the simple word list is a header column: "type", "freq" and option "range", followed by rows for each type in the corpus. AntConc will estimate the size of the corpus as the sum of the type frequencies and the total number of texts in the corpus from the maximum range (document frequency) value. If no range values are included, the range for all types will be set as 1.
 - b. Choose the "Advanced Word List" option to build a corpus from three files that describe the complete corpus (the "Corpus information file") the word list metadata (the "Word list information file", and the frequency information of types in the corpus (the "Word list data file"). The format of these files can be found by generating a word list using the demo corpus or one of the corpora from the online corpus repository and saving the results. In the saved .zip file, you will find examples of the table formats that you need to use. Alternatively, open the corpus database in an SQLite database reader (e.g., <https://sqlitebrowser.org/>) and view the different tables. An SQLite database reader should allow you to export the tables as a CSV/TSV files that you can use as templates for your own wordlist corpus creation.
3. To load the necessary file(s), click the "Add File" button for each file type and choose a file in CSV or TSV format.
4. Create the corpus.
 - a. To complete the corpus building process, click the "Create" button.
 - b. Once the corpus is created, a basic description will be displayed in the right windowpane.
 - c. The corpus will appear in the "Corpus Library".

[Note that a wordlist corpus can only be used as a reference corpus for use when generating keyword lists. Using a wordlist-based corpus in other tools will result in an error.]



SHORTCUTS

Here is a list of useful shortcuts (including some of the useful standard shortcuts on the operating system).

- CTRL/COMMAND + TAB: Toggles clockwise through the different tools in the tab bar.
- ALT + Tool Number: Selects a specific tool (e.g., ALT+1 for the KWIC Tool, ALT+2 for the Plot tool).

- SHIFT + CTRL/COMMAND + TAB: Toggles anti-clockwise through the different tools in the tab bar.
- CTRL/COMMAND + C: Copies the currently selected text.
- CTRL/COMMAND + A: Selects all text in the window.
- F4 (Win): Reveals the complete list of options in a 'combobox' widget (e.g., the search history in the search query box).
- ARROW KEYS: For any 'combobox' widgets (e.g., the KWIC search query box) or 'spinbox' widgets (e.g., the KWIC context size), the 'UP' and 'DOWN' arrow keys on the keyboard can be used to change the value of the option.
- CTRL/COMMAND + O: Opens the "Corpus Manager".
- CTRL/COMMAND + G: Opens the "Global Settings".
- CTRL/COMMAND + T: Opens the "Tool Settings".
- CTRL/COMMAND + H: Toggles the view "(H)ide" of "Show" setting for the KWIC tool file name column.
- CTRL/COMMAND + '+': Zooms in the "Plot Tool" display.
- CTRL/COMMAND + '-': Zooms out the "Plot Tool" display.
- CTRL/COMMAND + F: Searches for the next hit in the "File Tool" display.
- SHIFT + CTRL/COMMAND + F: Searches for the previous hit in the "File Tool" display.
- CTRL/COMMAND + SHIFT + T: Swaps/Toggles the target and reference corpora in the main display.

NOTES

- If you have any suggestions for improving the software or notice any bugs, please post them in the AntConc Discussion Group (<https://groups.google.com/g/antconc>). Indeed, many of the improvements and updates made to the software have been due to the comments of users around the world, for which I am very grateful. The AntConc Discussion Group is also a good place to discuss how you are using the software and any challenges that you face.
- If you find the software useful in your research, teaching, or learning, you may consider making a small donation to support the future development of this tool. A link to the donation page can be found here: <https://www.laurenceanthony.net/software/antconc/>
- You may also be interested in becoming an AntConc patron. Depending on the level of support, this option will give you priority support with direct access to the developer (Laurence Anthony), and various other benefits. A link to the donation page can be found here: <https://www.patreon.com/antlab>

CITING/REFERENCING ANTCONC

Use the following method to cite and reference AntConc according to the APA style guide:

Anthony, L. (YEAR OF RELEASE). AntConc (Version VERSION NUMBER) [Computer Software]. Tokyo, Japan: Waseda University. Available from <https://www.laurenceanthony.net/software.html>

For example, if you download AntConc 4.0.0, which was released in 2021, you will cite/reference it as follows: Anthony, L. (2021). AntConc (Version 4.0.0) [Computer Software]. Tokyo, Japan: Waseda University. Available from <https://www.laurenceanthony.net/software.html>

ACKNOWLEDGEMENTS

I would like to say thank you to the users of *AntConc* who have taken the trouble to post feedback on the software and make suggestions for improvements and/or changes. A very special thank you goes to all those who have very generously supported the project either through single donations via [PayPal](#) or becoming a [Patreon supporter](#). A complete list of individual acknowledgments can be found in the Help menu - "About AntConc" menu.

The development of *AntConc* has been supported by a Japan Society for Promotion of Science (JSPS) Grant-in-Aid for Scientific Research (C): No. 23501115, a Japan Society for Promotion of Science (JSPS) Grant-in-Aid for Young Scientists (B): No. 18700658, a Japan Society for Promotion of Science (JSPS) Grant-in-Aid for Young Scientists (B): No. 16700573, and a WASEDA University Grant for Special Research Projects: No. 2004B-861.

KNOWN ISSUES

None at present.