

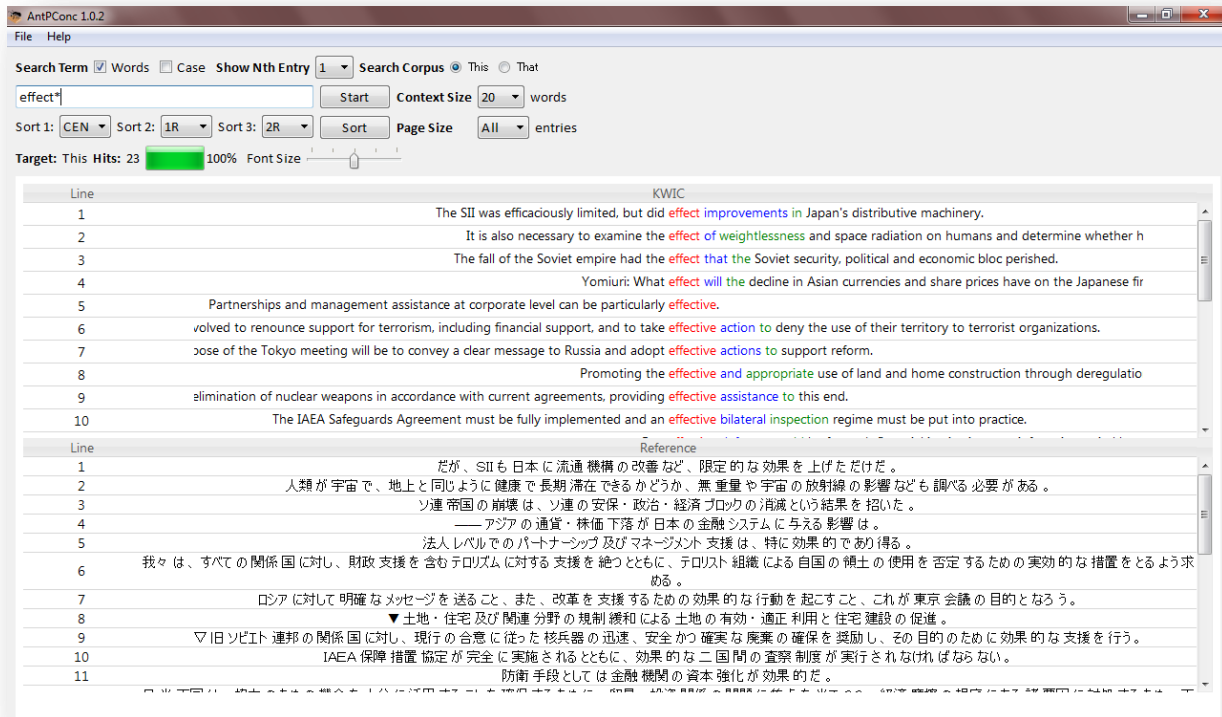


AntPConc (Windows)

Build 1.2.1 (Released December 20, 2017)

Laurence Anthony, Ph.D.

Center for English Language Education in Science and Engineering, School of Science and Engineering, Waseda University, 3-4-1 Okubo, Shinjuku-ku, Tokyo 169-8555, Japan
Help file version: 001.



Introduction

AntPConc is a simple freeware parallel corpus analysis tool that works with **line-break aligned, UTF-8 encoded** text files. *AntPConc* runs on any computer running Microsoft Windows (tested on Win 7), Macintosh OS X (tested on OS X 10.9 Mavericks), and Linux (tested on Linux Mint 17) computers. It is developed in Python and Qt using the *PyInstaller* compiler to generate executables for the different operating systems.

Getting Started (No installation necessary)

Windows

On Windows systems, simply double click the *AntPConc* icon to launch the program. On launching the PVST app, if you see an error relating to security permissions, go to the security preferences page in the OS settings and set the security to allow *AntPConc* to run.

Macintosh OS X

On Macintosh systems, simply double click the *AntPConc* zip file. The zip file will unzip the *AntPConc* application. Then, you can drag the *AntPConc* application to your application folder, your desktop, or anywhere else you like. Throw away the zip file when you are finished. On launching the application, if you see an error relating to security permissions, go to the security preferences page in the OS settings and set the security to allow *AntPConc* to run.



Linux

On Linux systems, set the permissions to run the executable, then double click the *AntPConc* icon to launch the program.

Building a parallel corpus (from two or more line-break aligned UTF-8 encoded raw text files)

Step 1: Click on the File->Build/Edit menu option. The "Corpus Builder" dialog box will appear.

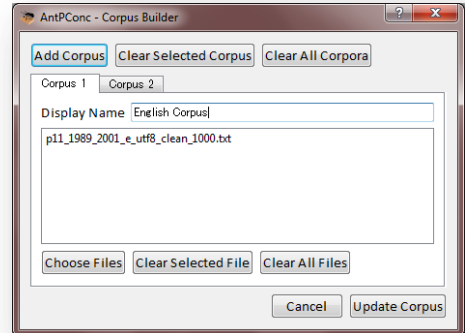
Step 2: Select "Corpus 1" and load your first UTF-8 encoded raw text file. Each line of this file should be aligned with each line of your other raw text files. A 'line' is a string of text with a line break at the end. See the following:

| | |
|---------|---------|
| FILE A | FILE B |
| line 1a | line 1b |
| line 1b | line 2b |
| line 1c | line 3b |
| .. | ... |

Step 3: Click on the "Display Name" entry box, and give your first corpus an appropriate name (e.g. English Corpus, Target Corpus, etc.)

Step 4: Click on "Corpus 2" and repeat steps 2 and 3

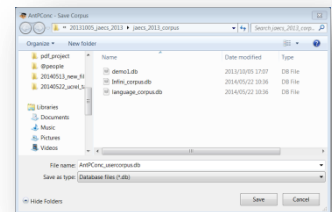
Step 5: Click 'Update Corpus' to build an internal database of the parallel corpus that you have built.



Saving an already built parallel corpus

Step 1: Complete the steps 1 to 5 from the "building a parallel corpus" explanation above to build your corpus from a set of raw files.

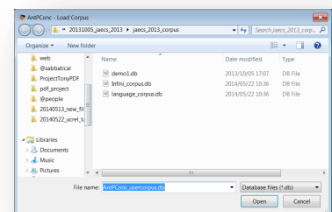
Step 2: Click on the File->Save Corpus menu option. Follow the Save Dialog instructions and save your built corpus using the .db extension.



Loading an already built a parallel corpus

Step 1: Complete the steps 1 and 2 from the "saving an already built parallel corpus" explanation above to save a built corpus from a set of raw files.

Step 2: Click on the File->Load Corpus menu option. Follow the Load Corpus Dialog instructions and load your corpus into AntPConc. The parallel corpus will be loaded into the system and the names you gave to the different parts of the parallel corpus will be shown as radiobuttons next to the "Search Corpus" label. Clicking on one of the radiobuttons will activate that part of the parallel corpus for searching.



Editing an already built a parallel corpus

Step 1: Click on the File->Load Corpus menu option. Follow the Load Corpus Dialog instructions and load your corpus into AntPConc.

Step 2: Click on the File->Build/Edit menu option. The "Corpus Builder" dialog box will appear (see above).

Step 3: Add or delete parts of the parallel corpus as necessary. Also, if you want to change the name of the corpus parts, you can do this here.

Searching a parallel corpus

Step 1: Build a corpus or load a corpus into AntPConc following the steps above.

- Step 2:** Choose which part of the corpus you want to search in, e.g., English, Target, etc. by clicking on one of the radiobuttons next to the "Search Corpus" label.
- Step 3:** Activate the "Words" checkbox to search for strings of text comprised of Unicode "Letter" class characters delimited by one or more non-Letter characters. Deactivate the "Words" checkbox to search for any string of Unicode "Letter" class characters.
- Step 4:** Choose a 'thinning option' to show all hits (Nth Entry = 1), every fifth hit (Nth Entry = 5) and so on.
- Step 5:** Choose a context size to specify the approximate number of words to the left and right of the search hit that will be shown in the results window.
- Step 5:** Choose a page size option to specify how many results will be shown per page in the results window.
- Step 6:** Determine the sort order of the results, e.g. sorted by the center term first (CEN), then the first word to the right (1R), and then the second word to the right (2R).
- Step 7:** Type your search word or phrase into the search box.
- Step 8:** Click "Start" or hit the RETURN key to generate the results.
- Step 9:** Use the font size adjuster to change the font size of the results.

NOTES

Comments/Suggestions/Bug Fixes

All new editions and bug fixes are listed in the revision history below. However, if you find a bug in the program, or have any suggestions for improving the program, please let me know and I will try to address the issues in a future version.

This software is available as 'freeware' (see Legal Matter below), but it is important for my funding to hear about any successes that people have with the software. Therefore, if you find the software useful, please send me an e-mail briefly describing how it is being used.

CITING/REFERENCING *AntPConc*

Use the following method to cite/reference *AntPConc* according to the APA style guide:

Anthony, L. (YEAR OF RELEASE). *AntPConc* (Version VERSION NUMBER) [Computer Software]. Tokyo, Japan: Waseda University. Available from <http://www.antlab.sci.waseda.ac.jp/>

For example if you download *AntPConc* 1.1.0 which was released in 2014, you would cite/reference it as follows:

Anthony, L. (2014). *AntPConc* (Version 1.1.0) [Computer Software]. Tokyo, Japan: Waseda University. Available from <http://www.antlab.sci.waseda.ac.jp/>

Note that the APA instructions are not entirely clear about citing software, and it is debatable whether or not the "Available from ..." statement is needed. See here for more details:

<http://owl.english.purdue.edu/owl/resource/560/10/>

LICENSE for *AntPConc*

AntPConc 1.0 and any minor updates issued by AntLab Solutions (collectively 'the Software')

TERMS GOVERNING THE USE OF THE SOFTWARE

The Software is protected by copyright and must not be used, displayed, modified, adapted, distributed, transmitted, transferred or published or otherwise reproduced in any form by any means other than strictly in accordance with the terms set out below. By installing the Software, you agree to be bound by the terms of the

license. This *AntPConc* License (“License”) is made between AntLab Solutions, Tokyo, Japan as licensor, and you, as licensee, as of the date of your use of the Software. The Software is in use on a computer when it is loaded into the RAM or installed into the permanent memory of that computer, e.g., a hard disk or other storage device.

1. License Material

These terms govern your use of the Software but not including subsequent versions (e.g. *AntPConc* 2.0').

2. License Grant

AntLab Solutions grants to you a personal non-exclusive non-transferable license ('the License') to use the Software in the following specific contexts.

a) Non-Commercial (Freeware) Use:

You may use the software for non-profit purposes on more than one computer or on a network so long as you are the sole user of the Software. (A “network” is any combination of two or more computers that are electronically linked and capable of sharing the use of a single software program.) You are not permitted to sell, lease, distribute, transfer, sublicense, or otherwise dispose of the Software, in whole or in part, for any form of actual or potential commercial gain or consideration.

b) Commercial Evaluation (Trial) Use:

You may evaluate (trial) the software for commercial purposes for a period of no more than fourteen (14) days from the date of download on more than one computer or on a network so long as you are the sole user of the Software.

c) Commercial Use

When you pay the commercial license fee established by AntLab Solutions, you may use the software for non-profit or commercial purposes on more than one computer or on a network so long as you are the sole user of the Software. (A “network” is any combination of two or more computers that are electronically linked and capable of sharing the use of a single software program.) You will obtain a separate license for each additional user of the Software (whether or not such users are connected on a network). You are not permitted to sell, lease, distribute, transfer, sublicense, or otherwise dispose of the Software, in whole or in part, for any form of actual or potential commercial gain or consideration.

3. Termination

You may terminate this License at any time by uninstalling the Software and deleting it. The License will also terminate if you breach any of the terms of the License.

4. Proprietary Rights

The Software is licensed, not sold, to you. AntLab Solutions reserves all rights not expressly granted to you. Ownership of the Software and its associated proprietary rights, including but not limited to patent and patent applications, are retained by AntLab Solutions. The Software is protected by the copyright laws of Japan and by international treaties. Therefore, you must comply with such laws and treaties in your use of the Software. You agree not to remove any of AntLab Solutions' copyright, trademarks, and other proprietary notices from the Software.

5. Distribution

Except as may be expressly allowed in Section 2, or as otherwise agreed to in a written agreement signed by both you and AntLab Solutions, you will not distribute the Software, either in whole or in part, in any form or medium.

6. Transfer and Use Restrictions

You may not sell, license, sub-license, lend, lease, rent, share, assign, transmit, telecommunicate, export, distribute or otherwise transfer the Software to others, except as expressly permitted in this License Agreement or in another agreement with AntLab Solutions. You may not modify, reverse engineer, decompile, decrypt, extract, or otherwise disassemble the Software.

7. Warranties

ANTLAB SOLUTIONS MAKES NO WARRANTIES WHATSOEVER REGARDING THE SOFTWARE AND IN PARTICULAR, DOES NOT WARRANT THAT THE SOFTWARE WILL FUNCTION IN ACCORDANCE WITH THE ACCOMPANYING DOCUMENTATION IN EVERY COMBINATION OF HARDWARE PLATFORM OR SOFTWARE ENVIRONMENT OR CONFIGURATION, OR BE COMPATIBLE WITH EVERY COMPUTER SYSTEM. IF THE SOFTWARE IS DEFECTIVE FOR ANY REASON, YOU WILL ASSUME THE ENTIRE COST OF ALL NECESSARY REPAIRS OR REPLACEMENTS.

8. Disclaimer

ANTLAB SOLUTIONS DOES NOT WARRANT THAT THE SOFTWARE OR SERVICE IS FREE FROM BUGS, DEFECTS, ERRORS OR OMISSIONS. THE SOFTWARE OR SERVICE IS PROVIDED ON AN "AS IS" BASIS AND ANTLAB SOLUTIONS MAKES NO OTHER WARRANTIES OR CONDITIONS, EXPRESS OR IMPLIED, WITH RESPECT TO THE SOFTWARE INCLUDING WITHOUT LIMITATION THE IMPLIED WARRANTIES OR CONDITIONS OF MERCHANTABILITY OR FITNESS FOR A PARTICULAR PURPOSE.

9. Limitation of Liability

ANTLAB SOLUTIONS WILL HAVE NO LIABILITY OR OBLIGATION FOR ANY DAMAGES OR REMEDIES, INCLUDING, WITHOUT LIMITATION, THE COST OF SUBSTITUTE GOODS, LOST DATA, LOST PROFITS, LOST REVENUES OR ANY OTHER DIRECT, INDIRECT, INCIDENTAL, SPECIAL, GENERAL, PUNITIVE OR CONSEQUENTIAL DAMAGES, ARISING OUT OF THIS LICENSE OR THE USE OR INABILITY TO USE THE SOFTWARE OR SERVICE. IN NO EVENT WILL ANTLAB SOLUTIONS'S TOTAL AGGREGATE LIABILITY (WHETHER IN CONTRACT (INCLUDING FUNDAMENTAL BREACH), WARRANTY, TORT (INCLUDING NEGLIGENCE), PRODUCT LIABILITY, INTELLECTUAL PROPERTY INFRINGEMENT OR OTHER LEGAL THEORY) WITH REGARD TO THE SOFTWARE AND/OR THIS LICENSE EXCEED THE LICENSE FEE PAID BY YOU TO ANTLAB SOLUTIONS. FURTHER, ANTLAB SOLUTIONS WILL NOT BE LIABLE FOR ANY DELAY OR FAILURE TO PERFORM ITS OBLIGATIONS UNDER THIS LICENSE AS A RESULT OF ANY CAUSES OR CONDITIONS BEYOND ANTLAB SOLUTIONS' REASONABLE CONTROL

10. Jurisdiction

These terms will be governed by Japanese law and the Japanese courts shall have jurisdiction.

KNOWN ISSUES

None at present.

REVISION HISTORY

1.2.1 Minor upgrade

Bug fixes:

1. Corrected an issue that caused corpora containing multiple files to become out of sync during the building process.

1.2.0 Minor upgrade

New features:

1. Revised icon
2. Multi-platform support added (Linux).

3. New ordering and renaming of menu items to make operations a little clearer.

1.1.0 Minor upgrade

New features:

1. New help file added to the menu of AntPConc

Bug fixes:

2. Fixes a bug that caused the search words and sorted words to not be highlighted in the results display. This bug was introduced in version 1.0.3 as a result of adding Unicode 'marks' to the token definition.

1.0.3 Minor upgrade

New features

1. Added Unicode 'marks' to the internal token definition to handle some specific non-English diacritics.

1.0.2 Minor upgrade

Bug fixes:

1. Corrected a few rendering issues in the interface.

1.0.0

This is the first version of the program

Copyright: Laurence Anthony, 2017